

# N-SERIES TERAFRAME™ NETWORK CABINET

Configure This Online

## KEY FEATURES

- Designed specifically to control side-to-side airflow for Cisco 6500 and 9500 series network switch equipment deployed in a hot aisle/cold aisle data center environment
- Offset doors and side panels provide extra interior space around equipment for enhanced side-to-side airflow and additional cable management
- Easy access to cables and equipment with removable doors, top panel and side panels
- Includes T-shaped cable guides with openings that align with each RMU on the rack to divide and organize cables by RMU as the cables enter or exit the rack-mount space
- The front and rear doors are perforated for maximum airflow into and out of the cabinet
- The Network Switch Exhaust Duct guides hot exhaust air from the side of rack-mount switches to the rear door
- Each cabinet includes two pairs of 19" EIA equipment mounting rails to provide front and rear support for equipment and shelves
- Mounting rails are RMU marked and numbered for exact planning and placement of equipment
- Cabinets are available in 10 heights and 11 depths to match site requirements

## APPLICATIONS

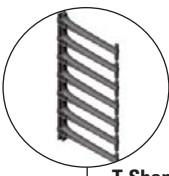
- Support network switches with side-to-side airflow in hot aisle/cold aisle data center environments
- Support patch panels and fiber enclosures or a mix of patch panels, fiber enclosures and switches when cabinets are deployed in data centers or other network facilities

## USE WITH

- TeraFrame Server Cabinets
- Cable Management Fingers Kit
- Caster Kit

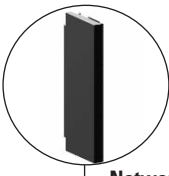
## RELATED ACCESSORIES

- CPI Fiber Management
- Universal Horizontal Cable Manager
- Jumper Trays
- Extra Heavy Duty Sliding Shelf
- Saf-T-Grip® Reusable Cable Management Straps



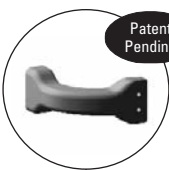
**T-Shaped Cable Guides**

Divide and organize cables by RMU space



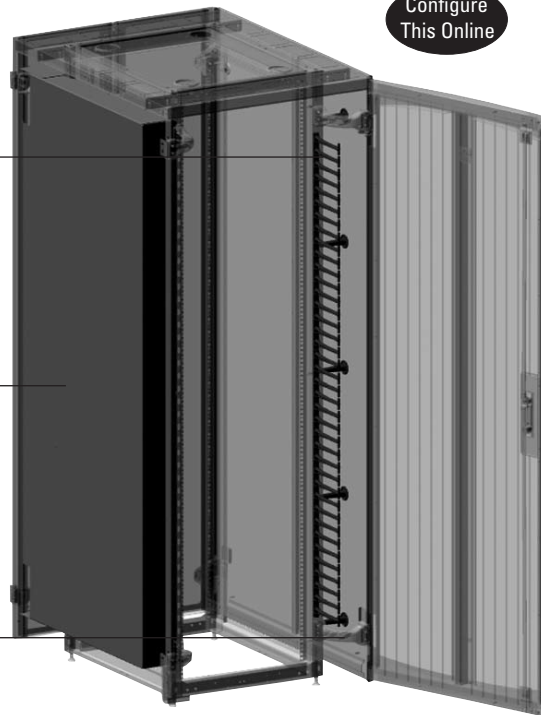
**Network Switch Exhaust Duct**

Isolates and guides hot exhaust air from cabinet



**Standoff Brackets**

Provide extra interior space for cables



The N-Series TeraFrame™ Network Cabinet provides an engineered solution for network switches and cabling in data centers with hot aisle/cold aisle layouts, delivering superior thermal management for high-density applications.

Featuring offset doors and side panels, the N-Series TeraFrame Network Cabinet provides extra interior space around the cabinet frame for cable management and enhanced airflow. Select the Network Switch Exhaust Duct option when deploying network switches that require side-to-side airflow. The Network Switch Exhaust Duct, designed to support Cisco 6500 and 9500 series switches, isolates and re-directs hot exhaust air from the side to the rear of the cabinet to help prevent the re-circulation of hot air through equipment and establishes best-practices for a hot aisle/cold aisle layout.

The N-Series TeraFrame Network Cabinet includes vertical cable guides and cable management spools to help organize cables. The guides are T-shaped with openings that align with each RMU space on the rack and attach to the front of the cabinet frame. The spools attach to the side of the cabinet frame and help guide cables along the side of the cabinet preventing them from accidentally blocking air intakes on switch chassis. Use the vertical cable guides and cable management spools to route cables to the right side of switches to maintain full access to the switch fan modules.

Available in 10 heights and 11 depths, the N-Series TeraFrame Network Cabinet matches F-Series TeraFrame Cabinet System sizes. Each cabinet includes two pairs of 19" EIA equipment mounting rails to provide front and rear support for equipment and/or equipment shelves. Choose square-punched or tapped mounting rails. Mounting rails are RMU marked and numbered for exact placement of equipment.

Each cabinet includes a top panel with knockout cable ports, a single perforated front door and perforated double rear doors. Both doors have a swing handle with a two-point latch with keyed or combination locks. Solid or vented locking side panels are optional. See inside for product details. Contact CPI Technical Support or visit the CPI Website ([www.chatsworth.com/configurator](http://www.chatsworth.com/configurator)) for configuration assistance.



**SPECIFICATIONS**

- Freestanding equipment cabinet engineered for network switches and cabling
- Provides front and rear support for 19"W EIA rack-mount equipment and shelves
- For indoor use only, in environmentally controlled areas; may not be used outdoors, in harsh environments or in air-handling spaces
- Includes:
  - Welded steel four-post frame
  - Equipment mounting rails, two pairs
  - Leveler feet and floor anchor brackets
  - Ground terminal block
  - Baying Kit
  - Equipment mounting hardware
  - Single, perforated front door with swing handle
  - Double, perforated rear door with swing handle
  - Five-piece top panel: center panel and four perimeter panels (front, sides, rear) with knockouts
- Equipment space:
  - See Dimensions and Ordering Information
- Doors/latches:
  - Front door is curved, rear door is flat
  - Single front door, double rear door
  - Door panels/inserts are perforated (79% open)
  - Each door has a swing handle and a two-point latch
  - Choose keyed or combination/keyed locks
  - Easy to remove front and rear doors
  - Front door has captive hinge pin, rear door has removable hinge pins
  - Order the Right Hand Door Latch Kit (P/N 34684-C02; page 6) to reverse front door swing
- Side panels:
  - Order with cabinet or as service part
  - Solid or vented panels with two recessed locking latches
- Top panel:
  - Five-piece top panel: one center panel and four perimeter panels (front, rear, sides)
  - Center panel is solid with four 2.75" (70 mm) diameter grommet-protected holes
  - Perimeter panels are solid with three, four or five 3.1" x 5.3" (79 mm x 135 mm) cable knockouts
  - Side perimeter top panels can be removed for larger cable quantities
  - Side perimeter top panels are 3.5" wide (89 mm) and the same depth as the frame

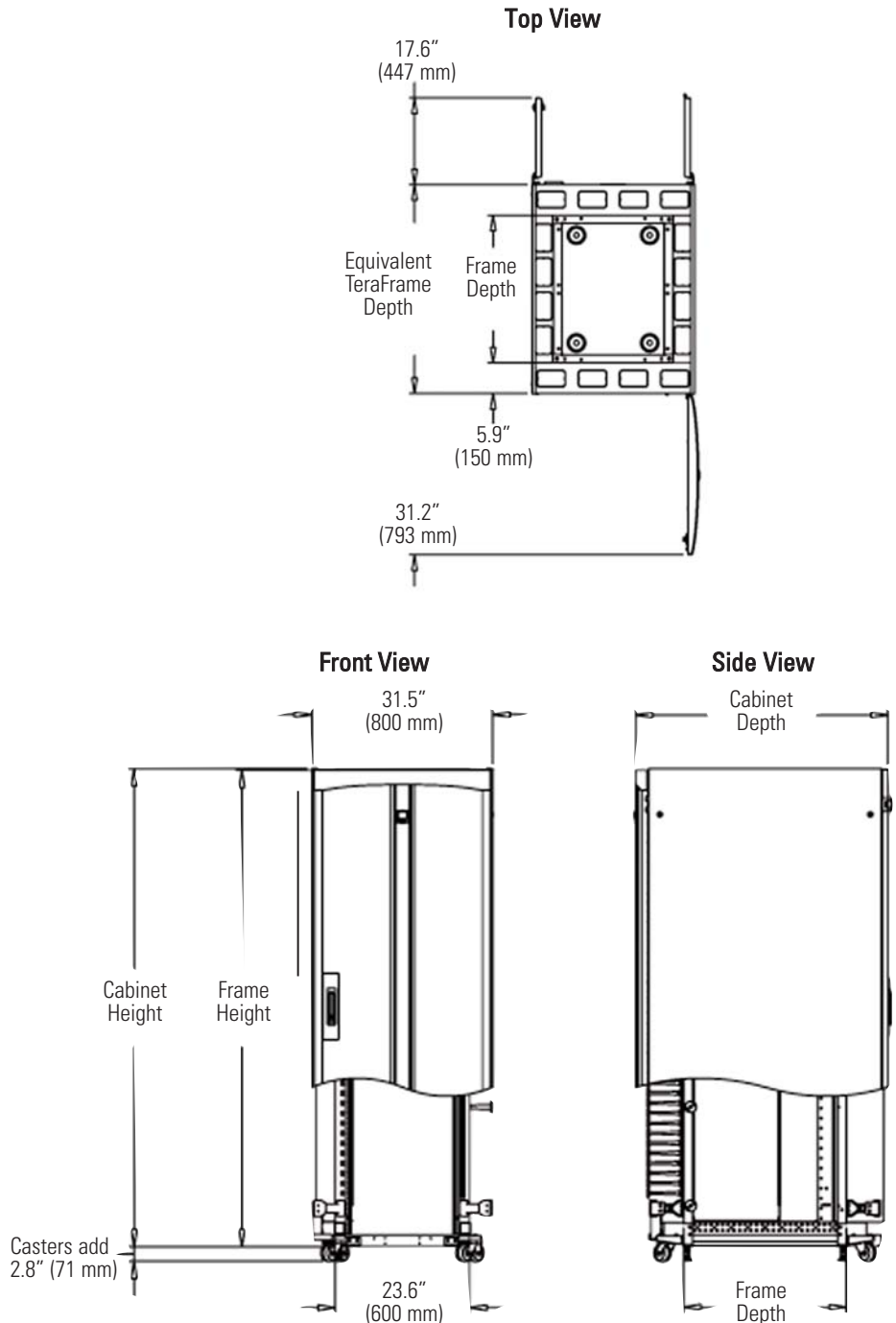
• Cable capacities (50% fill):

Location	Area (in <sup>2</sup> )	Area (mm <sup>2</sup> )	Cat 5e	Cat 6	Cat 6a
Top Grommet	5.9	3810	58	37	23
Top Knockout	16.4	10 580	161	104	64
Corner	28.7	18 520	283	182	112
Side (min.)	76.3	49 230	752	484	298

*Note: Based on .220" (6 mm) OD Cat 5e, .275" (7 mm) OD Cat 6, .350" (9 mm) OD Cat 6a 4-pair UTP cable. Side value is for one removed side perimeter top panel on a 650 mm deep frame. Deeper frames will have larger capacities. Corner is the area between the outside corner of frame and the inside corner formed by the door and side panel. Corner fill values are the same for all cabinet sizes. Reduce corner fill values by 50% at standoff brackets.*

- Equipment support:
  - Two pairs of equipment mounting rails in the cabinet body 1-3/4" (44.45 mm) RMU, marked and numbered on all rails
  - 19"W, EIA-310-D Standard Universal 5/8"-5/8"-1/2" (15.9 mm – 15.9 mm – 12.7 mm) vertical hole spacing
  - Threaded or square-punched holes; square-punched holes accept cage nuts
  - Depth: Fixed front rails in cabinets with Network Switch Exhaust Duct. Other rails adjust in depth
  - Includes 50 each #12-24 screws with threaded rails or 25 each M6 cage nuts and screws with square-punched rails
- Load capacity: 2500 lb (1134 kg). Static on leveler feet
- Certifications: EIA-310-D compliant
- Material: Steel sheet and aluminum castings, aluminum extrusion on front door, plastic cable managers
- Construction: Welded frame, mounting rails bolt to frame
- Finish: Epoxy-polyester hybrid powder coat paint in Black, Signature Blue, Glacier White or Steel Gray

**DIMENSIONS**



**ORDERING INFORMATION**

**Cisco Compatible N-Series TeraFrame Network Cabinets**

The following N-Series TeraFrame Network Cabinets are Cisco Compatible and meet the Cisco compatibility guidelines for housing Catalyst 6500E network switched and MDS 9500 series SAN directors. Cisco Compatible cabinets are similar to other N-Series cabinets but include a special Network Switch Exhaust Duct, two power supply exhaust ducts and an EDS wrist strap attachment point.



Part Number	Description	Shipping Weight
NF2K-113C-C42	For Cisco 6506, 6509*, 6513, 9509	400 lb (181.4 kg)
NF3K-113C-C42	For Cisco 9513	400 lb (181.4 kg)

\*A Network Switch Exhaust Duct is not required for the Cisco 6509-NEBS switch.

ORDERING INFORMATION

Use the part number configurator below to create a custom N-Series TeraFrame Network Cabinet. Choose the **Height**, **With** or **Without Duct**, **Depth**, **Rail Style**, **Front Door**, **Rear Door**, **Latch**, **Color**, **Top Panel Style** and **Side Panel Style**. *Example part number: NF1K-113C-C42*



1. Height					
Cabinet		Frame		Rail	
in.	mm.	in.	mm.	RMU	
78.3	1989	78.1	1984	42	<b>C</b>
80.0	2033	79.9	2029	43	<b>D</b>
81.8	2077	81.6	2073	44	<b>E</b>
83.5	2122	83.4	2118	45	<b>F</b>
85.3	2166	85.1	2162	46	<b>G</b>
87.0	2211	86.9	2207	47	<b>H</b>
88.8	2255	88.6	2251	48	<b>J</b>
90.5	2300	90.4	2296	49	<b>K</b>
92.3	2344	92.1	2340	50	<b>L</b>
94.0	2389	93.9	2385	51	<b>M</b>

Note: When sizing to match the F-Series TeraFrame, use the same part number digit for cabinet height and depth as the F-Series TeraFrame.

2. Network Switch Exhaust Duct	
None - Includes two Cable Finger Kits	<b>0</b>
Included - Includes one Cable Finger Kit	<b>1</b>

Note: Use the Network Switch Exhaust Duct with switches that require side-to-side airflow.

3. Depth								
Cabinet		Rail (max)		Frame		Equiv F-Series		
in	mm	in	mm	in	mm	in	mm	
41.2	1047	22.6	575	25.6	650	37.4	950	<b>G</b>
42.2	1072	23.6	600	26.6	675	38.4	975	<b>H</b>
43.2	1097	24.6	625	27.6	700	39.4	1000	<b>J</b>
44.2	1122	25.6	650	28.5	725	40.4	1025	<b>K</b>
45.2	1147	26.6	675	29.5	750	41.3	1050	<b>L</b>
46.1	1172	27.6	700	30.5	775	42.3	1075	<b>M</b>
47.1	1197	28.6	725	31.5	800	43.3	1100	<b>N</b>
48.1	1222	29.5	750	32.5	825	44.3	1125	<b>P</b>
49.1	1247	30.5	775	33.5	850	45.3	1150	<b>R</b>
50.1	1272	31.5	800	34.4	875	46.3	1175	<b>T</b>
51.1	1297	32.5	825	35.4	900	47.2	1200	<b>U</b>

Note: Depths G and H have a maximum rail spacing less than 24" and will not support the Cisco Switch mounting brackets. Use CPI P/N 12336-719, 18" Deep Fixed Shelf, to support Cisco equipment when ordering these cabinet sizes.

Notes:

- Width: One width is available. Overall cabinet width with side panels is 31.5" (800 mm). The internal frame width without side panels is 23.6" (600 mm). The included mounting rails are 19" EIA-310-D compliant.
- Height: Ten heights are available. The frame height is the height of the internal frame without the top panel. The cabinet height is the overall height of the cabinet with a top panel. Leveler feet add approximately 1" (25 mm) to the height of the cabinet. RMU are rack-mount units. Frame heights match F-Series TeraFrame™ Cabinet System heights.
- Network Switch Exhaust Duct: Select [1] to include a Network Switch Exhaust Duct with the cabinet. The duct will be pre-installed into the cabinet and includes removable exhaust panels on the side facing equipment. The duct is 2 RMU less than the full height of the cabinet and is designed to support switches. Select [0] to exclude the duct for switches that require front-to-rear airflow or for network patching applications. Cabinets that include the Network Switch Exhaust Duct include one Cable Management Fingers Kit (see page 4), fixed front mounting rails and adjustable rear mounting rails. Cabinets that do not include the Network Switch Exhaust Duct include two Cable Management Fingers Kits and adjustable mounting rails.
- Depth: Eleven depths are available. The frame depth is the depth of the internal frame without doors. The cabinet depth is the overall depth of the cabinet with doors. Rail depth is the maximum rail-to-rail depth within the frame. N-Series TeraFrame Network Cabinet can be used side-by-side with F-Series TeraFrame System Cabinets. Overall cabinet depths are the same. Equivalent F-Series TeraFrame frame depths are listed in a separate column in the order table.
- Rail Style: Square-punched rails use snap-in cage nut hardware that can be changed to match equipment requirements. Tapped rails use screws. Order additional mounting hardware as required (see page 5).
- Front Door - The front door is hinged on the right side. To reverse the door swing, order a Right Hand Door Latch Kit (P/N 34684-C02, see page 6).
- Latches: All doors have swing handles and a two point cam latch. The keyed lock includes a physical key. The combination lock has a programmable three-digit combination and is opened with three dials on the handle or with a key.
- Side Panels: Vented and solid side panels are available. Select a quantity of one or two panels per cabinet. Omit side panels to bay cabinets.

10. Side Panel Style	
<b>0</b>	None
<b>1</b>	Solid, 1 each
<b>2</b>	Solid, 2 each
<b>3</b>	Vented, 1 each
<b>4</b>	Vented, 2 each

9. Top Panel	
<b>4</b>	Solid with Knock-Out ports

8. Color	
<b>C</b>	Black
<b>D</b>	Signature Blue
<b>E</b>	Glacier White
<b>F</b>	Steel Gray

7. Latches (Door)	
<b>C</b>	Two-Point, Cam Latch, Keyed Lock
<b>E</b>	Two-Point, Cam Latch, Combination Lock

6. Rear Door	
<b>3</b>	Double, Perforated Metal

5. Front Door	
<b>1</b>	Single, Perforated Metal

4. Rail Style	
<b>1</b>	Square Punch, 2 Pair
<b>2</b>	Tapped, #12-24, 2 Pair

ACCESSORIES



Patented

**Cable Management Fingers Kit**

Provides vertical cable management at one corner of the cabinet frame. Includes a set of T-shaped cable guides and five cable spools. The T-shaped cable guides attach to the front of the cabinet frame. The openings in between the T-shaped fingers align with the RMU spaces on the rack. Each opening can pass up to 48 CAT 6a patch cords. The cable spools are approximately 1" (25 mm) in diameter and 4" high (100 mm) and attach to the side of the cabinet frame. Match to the height of the cabinet.

Part Number	Description	Shipping Weight
34680-002	For 42 RMU Cabinets	4 lb (1.8 kg)
34680-003	For 43 RMU Cabinets	4 lb (1.8 kg)
34680-004	For 44 RMU Cabinets	4 lb (1.8 kg)
34680-005	For 45 RMU Cabinets	4 lb (1.8 kg)
34680-006	For 46 RMU Cabinets	4 lb (1.8 kg)
34680-007	For 47 RMU Cabinets	4 lb (1.8 kg)
34680-008	For 48 RMU Cabinets	4 lb (1.8 kg)
34680-009	For 49 RMU Cabinets	4 lb (1.8 kg)
34680-010	For 50 RMU Cabinets	4 lb (1.8 kg)
34680-011	For 51 RMU Cabinets	4 lb (1.8 kg)

Color is Black.

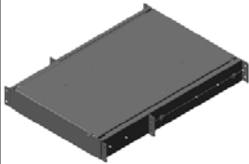


**Caster Kit**

Use to move and position the cabinet before loading the cabinet with equipment. Set of four full-swivel casters and mounting brackets. The Caster Kit attaches to the outside corners of the cabinet frame and can be removed after the cabinet is set in place.

Part Number	Description	Shipping Weight
34628-C01	Caster Kit, Set of 4	25 lb (11.3 kg)

Color is Black.



**Extra Heavy Duty Sliding Shelf**

Use to support heavy network switches and large equipment in the cabinet. 19" EIA rack-mount shelf; uses only 2 RMU of rack-mount space. Sliding shelf has 17.5" wide by 26" deep (445 mm by 660 mm) mounting surface and supports up to 300 lb (136.1 kg). Shelf extends 24" (610 mm) and locks in the open and closed positions. Attaches to mounting rails set 20" to 34" deep (510 mm to 860 mm).

Part Number	Description	Shipping Weight
12700-719	19"W Solid Shelf	29 lb (13.2 kg)

Color is Black.



**Universal Horizontal Cable Manager**

19" EIA rack-mount cable manager available in 1 RMU, 2 RMU and 3 RMU, single- and double-sided versions. Use above and below patch panels to guide cables to network ports

Part Number	Description	Shipping Weight
30139-719	Single-Sided, 1 RMU 4.96"D (126.0 mm)	2 lb (0.9 kg)
30130-719	Single-Sided, 2 RMU 5.14"D (130.6 mm)	3 lb (1.4 kg)
30131-719	Single-Sided, 3 RMU 5.14"D (130.6 mm)	4 lb (1.8 kg)
30529-719	Double-Sided, 1 RMU 11.73"D (297.9 mm)	5 lb (2.3 kg)
30530-719	Double-Sided, 2 RMU 11.73"D (297.9 mm)	6 lb (2.7 kg)
30531-719	Double-Sided, 3 RMU 11.73"D (297.9 mm)	6 lb (2.7 kg)

Color is Black.



**Jumper Trays**

19" EIA rack-mount cable management tray available in 3.5" and 6" deep (89 mm and 150 mm) versions. Use above network switches to provide a side-to-side pathway for cables.

Part Number	Description	Shipping Weight
12183-719	19"W x 2 RMU x 3.5"D (89 mm)	3 lb (1.4 kg)
13183-719	19"W x 2 RMU x 6"D (150 mm)	4 lb (1.8 kg)

Color is Black.



**Filler Panels**

Metal 19" EIA rack-mount panels that seal open rack-mount spaces along the front mounting rail in the cabinet to improve thermal management in the cabinet. Attach with mounting hardware to either style rail.

Part Number	Description	Shipping Weight
30026-701	19"W x 1 RMU Panel	1 lb (0.5 kg)
30026-702	19"W x 2 RMU Panel	1 lb (0.5 kg)
30026-703	19"W x 3 RMU Panel	1 lb (0.5 kg)

Color is Black. Other sizes available.



**Snap-In Filler Panels**

Plastic 19" EIA rack-mount panels that seal open rack-mount spaces along the front mounting rail in the cabinet to improve thermal management. Attach to square punched rails only. Snap-in place, no mounting hardware required.

Part Number	Description	Shipping Weight
34537-000	19"W x 1 RMU Panel	1 lb (0.5 kg)
34538-000	19"W x 2 RMU Panel	2 lb (0.9 kg)

Color is Black.

Fiber Management accessories for Corning Cable Systems LANscape® Pretium™ Solutions Plug and Play™ Universal System and Zero-U System are also available.

Accessory list continued on Page 5

ACCESSORIES



**Saf-T-Grip® Reusable Cable Management Straps**

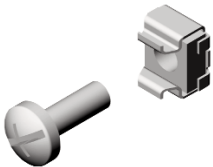
Wide hook and loop straps for bundling cables. End grommet and buckle design can be easily adjusted and attached to equipment mounting rails.

Part Number	Description	Shipping Weight
05006-201	6"L for 2" Diameter Cable Bundles	1 lb (0.5 kg)
05009-201	9"L for 3" Diameter Cable Bundles	1 lb (0.5 kg)
05012-201	12"L for 4" Diameter Cable Bundles	1 lb (0.5 kg)

Color is Black. Other sizes available.

**Equipment Mounting Hardware**

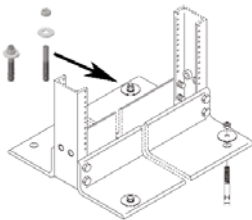
Additional equipment mounting hardware. Use screws with tapped rails. Use cage nuts and screws with square-punched rails.



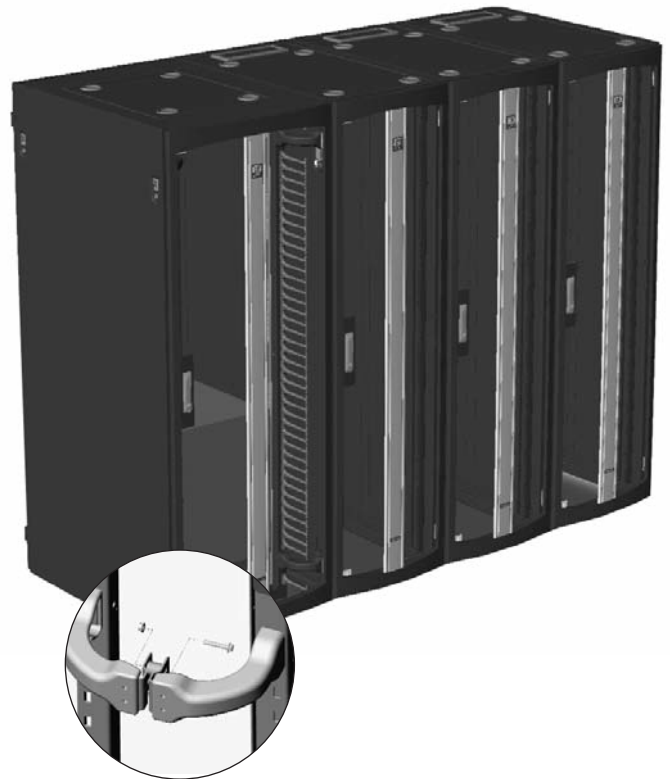
Part Number	Description	Shipping Weight
40605-001	Screws, #12-24, 50 Pack, Zinc	1 lb (0.5 kg)
40605-005	Screws, #12-24, 50 Pack, Black	1 lb (0.5 kg)
12637-001	Cage Nuts/Screws, M6, 25 Pk, Gold	1 lb (0.5 kg)
12638-001	Cage Nuts/Screws, M6, 25 Pk, Zinc	1 lb (0.5 kg)
12639-001	Cage Nuts/Screws, M6, 25 Pk, Black	1 lb (0.5 kg)

**Floor Installation Hardware**

Installation hardware for concrete slab floors. Cabinets should be attached to the floor. Threaded rod and other hardware is also available.



Part Number	Description	Shipping Weight
40604-003	Installation Kit, Concrete Slab	1 lb (0.5 kg)



**Baying Kit**

Connect two N-series TeraFrame Network Cabinets side-by-side. The cabinets must be the same height and depth and side panels must be removed.

Part Number	Description	Shipping Weight
34682-C01	Cabinet Baying Kit	5 lb (2.3 kg)

Baying kit is included with each cabinet

SERVICE PARTS

Service parts include mounting rails, top panels, side panels, doors and door latches and are used as replacement parts to upgrade cabinets as applications change. Please contact CPI if you do not see the service part you need.

**Fixed Mounting Rails**

Replacement pair of mounting rails for the front side of the N-Series TeraFrame Network Cabinets equipped with the Network Switch Exhaust Duct. Mounting rails attach to the cabinet frame's vertical uprights and are not adjustable in depth. The rail minimizes interference with the exhaust duct. Match to cabinet height.

Part Number		Description	Shipping Weight*
Square-Punched	Tapped #12-24		
34626-002	34667-002	For 42 RMU Cabinet	13 lb (5.9 kg)
34626-003	34667-003	For 43 RMU Cabinet	13 lb (5.9 kg)
34626-004	34667-004	For 44 RMU Cabinet	14 lb (6.4 kg)
34626-005	34667-005	For 45 RMU Cabinet	14 lb (6.4 kg)
34626-006	34667-006	For 46 RMU Cabinet	14 lb (6.4 kg)
34626-007	34667-007	For 47 RMU Cabinet	14 lb (6.4 kg)
34626-008	34667-008	For 48 RMU Cabinet	14 lb (6.4 kg)
34626-009	34667-009	For 49 RMU Cabinet	15 lb (6.8 kg)
34626-010	34667-010	For 50 RMU Cabinet	15 lb (6.8 kg)
34626-011	34667-011	For 51 RMU Cabinet	15 lb (6.8 kg)

Mounting rails are plated and silver colored.

\*Shipping weights are for tapped rails.

**Adjustable-Depth Mounting Rails**

Replacement pair of mounting rails for the rear side of the N-Series TeraFrame Network Cabinets equipped with the Network Switch Exhaust Duct and for the front and rear sides of cabinets that do not have an exhaust duct. Mounting rails attach to the side of the cabinet frame and adjust in depth front-to-rear. Match to cabinet height.

Part Number		Description	Shipping Weight*
Square-Punched	Tapped #12-24		
34408-002	34409-002	For 42 RMU Cabinet	27 lb (12.2 kg)
34408-003	34409-003	For 43 RMU Cabinet	28 lb (12.7 kg)
34408-004	34409-004	For 44 RMU Cabinet	28 lb (12.7 kg)
34408-005	34409-005	For 45 RMU Cabinet	29 lb (13.2 kg)
34408-006	34409-006	For 46 RMU Cabinet	29 lb (13.2 kg)
34408-007	34409-007	For 47 RMU Cabinet	30 lb (13.6 kg)
34408-008	34409-008	For 48 RMU Cabinet	30 lb (13.6 kg)
34408-009	34409-009	For 49 RMU Cabinet	31 lb (14.1 kg)
34408-010	34409-010	For 50 RMU Cabinet	31 lb (14.1 kg)
34408-011	34409-011	For 51 RMU Cabinet	32 lb (14.5 kg)

Mounting rails are plated and silver colored.

\*Shipping weights are for tapped rails.

**SERVICE PARTS**

Service parts include mounting rails, top panels, side panels, doors and door latches and are used as replacement parts to upgrade cabinets as applications change. Please contact CPI if you do not see the service part you need.

**Top Panel Kit**

Replacement top panel for the cabinet. Match to the depth and color of the cabinet. Top panels are solid and made of five pieces – a center piece and four perimeter pieces. The central piece has four 2.75" (70 mm ) diameter holes with grommets to protect cables. The panels along the perimeter have three, four or five 3.1" x 5.3" (79 mm x 135 mm) knockouts.

Part Number	Description	Shipping Weight
34653-X06	For 950 mm Deep Frame	32 lb (14.5 kg)
34653-X07	For 975 mm Deep Frame	33 lb (15.0 kg)
34653-X08	For 1000 mm Deep Frame	34 lb (15.4 kg)
34653-X09	For 1025 mm Deep Frame	34 lb (15.4 kg)
34653-X10	For 1050 mm Deep Frame	35 lb (15.9 kg)
34653-X11	For 1075 mm Deep Frame	35 lb (15.9 kg)
34653-X12	For 1100 mm Deep Frame	36 lb (16.3 kg)
34653-X13	For 1125 mm Deep Frame	37 lb (16.8 kg)
34653-X14	For 1150 mm Deep Frame	37 lb (16.8 kg)
34653-X15	For 1175 mm Deep Frame	38 lb (17.2 kg)
34653-X16	For 1200 mm Deep Frame	39 lb (17.7 kg)

X=Color: C=Black, D=Signature Blue, E=Glacier White, F=Steel Gray.

**Front Door**

Replacement front door for the cabinet. Match to the height and color of the cabinet. Front door has a perforated panel and does not include a latch (see Front Door Latches below).

Part Number	Description	Shipping Weight
34450-X26	For 42 RMU Cabinet	41 lb (18.6 kg)
34450-X27	For 43 RMU Cabinet	42 lb (19.1 kg)
34450-X28	For 44 RMU Cabinet	43 lb (19.5 kg)
34450-X29	For 45 RMU Cabinet	44 lb (20.0 kg)
34450-X30	For 46 RMU Cabinet	46 lb (20.9 kg)
34450-X31	For 47 RMU Cabinet	46 lb (20.9 kg)
34450-X32	For 48 RMU Cabinet	47 lb (21.3 kg)
34450-X33	For 49 RMU Cabinet	48 lb (21.8 kg)
34450-X34	For 50 RMU Cabinet	49 lb (22.2 kg)
34450-X35	For 51 RMU Cabinet	49 lb (22.2 kg)

X=Color: C=Black, D=Signature Blue, E=Glacier White, F=Steel Gray. Perforated panel is Black.

**Front Door Latches**

Replacement two-point front door latches. Choose lock type. Match to cabinet height.

Part Number		Description	Shipping Weight
Keyed Locks	Combination Locks		
34547-C09	34576-C05	For 42 RMU Cabinet	6 lb (2.7 kg)
34547-C13	34576-C07	For 43 RMU Cabinet	6 lb (2.7 kg)
34547-C17	34576-C09	For 44 RMU Cabinet	6 lb (2.7 kg)
34547-C21	34576-C11	For 45 RMU Cabinet	6 lb (2.7 kg)
34547-C25	34576-C13	For 46 RMU Cabinet	6 lb (2.7 kg)
34547-C29	34576-C15	For 47 RMU Cabinet	6 lb (2.7 kg)
34547-C33	34576-C17	For 48 RMU Cabinet	6 lb (2.7 kg)
34547-C37	34576-C19	For 49 RMU Cabinet	6 lb (2.7 kg)
34547-C41	34576-C21	For 50 RMU Cabinet	6 lb (2.7 kg)
34547-C45	34576-C23	For 51 RMU Cabinet	6 lb (2.7 kg)

Color is Black.

**Side Panels**

Replacement side panel for the cabinet. Match to the height, depth and color of the cabinet. Side panels are solid or vented with two recessed locking latches.

Style		Height (RMU)										Depth (mm)	Shipping Weight*
Solid	Vented	42	43	44	45	46	47	48	49	50	51		
34650	34670	-X40	-X57	-X74	-X91	-XAJ	-XBF	-XCC	-XCY	-XDU	-XEP	950	68 lb (30.8 kg)
		-X41	-X58	-X75	-X92	-XAK	-XBG	-XCD	-XDA	-XDV	-XER	975	69 lb (31.3 kg)
		-X42	-X59	-X76	-X93	-XAL	-XBH	-XCE	-XDB	-XDW	-XET	1000	71 lb (32.2 kg)
		-X43	-X60	-X77	-X94	-XAM	-XBJ	-XCF	-XDC	-XDY	-XEU	1025	72 lb (32.7 kg)
		-X44	-X61	-X78	-X95	-XAN	-XBK	-XCG	-XDD	-XEA	-XEV	1050	73 lb (33.1 kg)
		-X45	-X62	-X79	-X96	-XAP	-XBL	-XCH	-XDE	-XEB	-XEW	1075	75 lb (34.0 kg)
		-X46	-X63	-X80	-X97	-XAR	-XBM	-XCJ	-XDF	-XEC	-XEY	1100	76 lb (34.5 kg)
		-X47	-X64	-X81	-X98	-XAT	-XBN	-XCK	-XDG	-XED	-XFA	1125	77 lb (34.9 kg)
		-X48	-X65	-X82	-X99	-XAU	-XBP	-XCL	-XDH	-XEE	-XFB	1150	79 lb (35.8 kg)
		-X49	-X66	-X83	-XAA	-XAV	-XBR	-XCM	-XDJ	-XEF	-XFC	1175	80 lb (36.3 kg)
		-X50	-X67	-X84	-XAB	-XAW	-XBT	-XCN	-XDK	-XEG	-XFD	1200	81lb (36.7 kg)

X=Color: C=Black, D=Signature Blue, E=Glacier White, F=Steel Gray.  
\* Shipping Weight is for the 51 RMU high solid side panel.

**Rear Door**

Replacement rear double door for the cabinet. Match to the height and color of the cabinet. Rear door has perforated panels and does not include a latch (see Rear Door Latches below).

Part Number	Description	Shipping Weight
34511-X26	For 42 RMU Cabinet	41 lb (18.6 kg)
34511-X27	For 43 RMU Cabinet	42 lb (19.1 kg)
34511-X28	For 44 RMU Cabinet	43 lb (19.5 kg)
34511-X29	For 45 RMU Cabinet	44 lb (20.0 kg)
34511-X30	For 46 RMU Cabinet	46 lb (20.9 kg)
34511-X31	For 47 RMU Cabinet	46 lb (20.9 kg)
34511-X32	For 48 RMU Cabinet	47 lb (21.3 kg)
34511-X33	For 49 RMU Cabinet	48 lb (21.8 kg)
34511-X34	For 50 RMU Cabinet	49 lb (22.2 kg)
34511-X35	For 51 RMU Cabinet	49 lb (22.2 kg)

X=Color: C=Black, D=Signature Blue, E=Glacier White, F=Steel Gray. Perforated panel is Black.

**Rear Door Latches**

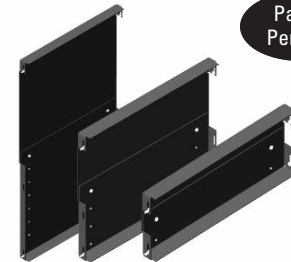
Replacement two-point rear door latches. Choose lock type. Match to cabinet height.

Part Number		Description	Shipping Weight
Keyed Locks	Combination Locks		
34513-C02	34579-C02	For 42 RMU Cabinet	6 lb (2.7 kg)
34513-C03	34579-C03	For 43 RMU Cabinet	6 lb (2.7 kg)
34513-C04	34579-C04	For 44 RMU Cabinet	6 lb (2.7 kg)
34513-C05	34579-C05	For 45 RMU Cabinet	6 lb (2.7 kg)
34513-C06	34579-C06	For 46 RMU Cabinet	6 lb (2.7 kg)
34513-C07	34579-C07	For 47 RMU Cabinet	6 lb (2.7 kg)
34513-C08	34579-C08	For 48 RMU Cabinet	6 lb (2.7 kg)
34513-C09	34579-C09	For 49 RMU Cabinet	6 lb (2.7 kg)
34513-C10	34579-C10	For 50 RMU Cabinet	6 lb (2.7 kg)
34513-C11	34579-C11	For 51 RMU Cabinet	6 lb (2.7 kg)

Color is Black.

**Network Switch Exhaust Duct Panel**

Use inside cabinets equipped with the Network Switch Exhaust Duct. Install above and below modular switches to form a seal between the exhaust grill on the switch chassis and the exhaust duct. Network Switch Exhaust Duct Panels are included with each cabinet that is equipped with the duct. Order additional panels as required to seal the duct.



Part Number	Description	Shipping Weight
34620-C01	2 RMU to 3 RMU Panel	3 lb (1.4 kg)
34620-C02	4 RMU to 7 RMU Panel	4 lb (1.8 kg)
34620-C03	8 RMU to 15 RMU Panel	6 lb (2.7 kg)

Color is Black.

**Right Hand Door Latch Kit**

Allows front door to be reversed to open from the right to left.

Part Number	Description	Shipping Weight
34684-C02	Right Hand Door Latch Kit	5 lb (2.3 kg)

\*TeraFrame orders shipping within the 48 contiguous states and District of Columbia may have a shorter delivery time when selected from the standard part matrix. All products quoted are subject to availability based on manufacturing capacity and shipping dates should be considered estimates only. For large order volumes requiring logistics coordination, Chatsworth Products, Inc. (CPI) reserves the right to negotiate scheduled shipment quantities and intervals.

